

Important Dates

Tuesday 17th March	Selected Y5/6 visit to 'Say No to Wisbech Incinerator'
Wednesday 18th March	Year 2 Wisbech Reads Event
Thursday 19th March	Purple Class Swimming Wk 5 of 6

This Week...

Our Diverse Planet – Science Day 2020

This planet has extremes of hot and cold; dry and wet; high and deep...and everything in –between. In all these places there is life in a huge variety of forms and at Beaupré the children had a chance to think about that range and how we interact with the planet in our own way.

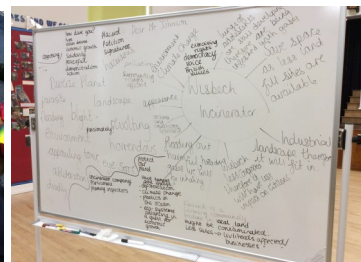
Orange and Yellow classes investigated how we deal with our waste and what impact that can have on plant and animal life at a local level with their research into the planned incinerator for Wisbech.

Green and Purple looked further afield with the effect we are having on our oceans, with Green Class focusing in on the problems that plastic waste is having on the wandering albatross in particular.

Red and Blue classes looked carefully at how different animals fit into their habitats and that, even though they may all live close together, animals can be vastly different in design, whether that be the number of their legs or the patterns on their wings. Fabulous butterfly paintings and animal models!

Rainbow class thought about all the different foods that grow on this planet and how eating local food can be better for the environment, and tasty too judging by their flapjacks! It always seems to come back to cake!

Thank you everybody for working so hard to give the children such a full day of science based learning.



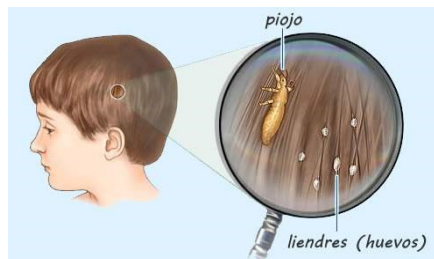
Important Information ...

Headlice

We have had a confirmed case of head lice in school. We would like to remind you to check your child's hair regularly for head lice and treat accordingly. Long hair should be tied back in school at all times.

For NHS guidelines for treating head lice and nits please use the following link:

<https://www.nhs.uk/conditions/head-lice-and-nits/>



Car Parking

Can we please remind you again to park considerately and drive carefully outside the school for the safety of our children and pedestrians. We have had a report this week of a carer being hit on the arm by a car wing mirror; thankfully the person is ok but we ask that you watch your speed and are considerate to all road users.

Please remember that the local fire service must be able to get through and respect our neighbouring properties.

Many thanks

Coming Up ...

Beaupré Fundraising Group

Creating lasting memories for the children of



Beaupré
COMMUNITY PRIMARY SCHOOL

The BFG will be running a competition on the school playground at pick up time, the week before we break up for the Easter holidays.

We have two large Easter eggs, one for adults and one for the children. All you need to do is guess the amount of pasta in a jar which will be on display on the playground at pick up time.

50p a guess and you can have as many guesses as you like. If more than one person guesses correctly, then the names will be put in a hat and a name drawn out for the winner.

We will announce the winners on Monday 30th March.

Good luck everyone.

Alison Nichols



Lunchtime Co.

A reminder that from Monday 16th March, Lunchtime Co. will be offering a packed lunch option for school meals, as well as the two hot choices. All meals options will remain at £2.30. The hot meal choices will remain the same for the rest of this term, with packed lunch options of a ham or cheese roll. Children can order in class on the day.



Coming Soon!

The Lunchbox!

LUNCHTIME CO.



Awards and Celebrations....

School Matters!



Attendance

Our attendance figures for the week ending Friday 6th March are as follows:

Gold	Green Class	99.13%.
Silver	Blue Class	98.97%
Bronze	Purple Class	98.57%

The winner of the 100% attendance prize for week ending Friday 6th March is Sofia in Blue Class.



1st	Combines
2nd	Robots
3rd	Windmills



Above and Beyond...

This week's 'Above and Beyond' goes to Zak, from Red Class for always being cheerful, upbeat and greeting everyone with a smile and warm welcome.



Dates for your diary - New events shown in bold

Monday 23rd March

Wednesday 25th March

Thursday 26th March

Friday 27th March

Monday 30th March

Monday 30th March

Tuesday 31st March

Wednesday 1st April

Monday 20th April

Friday May 8th

Monday 4th May -

Friday 15th May

Monday 11th May -

Thursday 14th May

Monday 18th May

Friday 22nd May

Monday 1st June

Monday 8th June -

Friday 12th June

Monday 8th June -

Friday 26th June

Monday 15th -

Wednesday -17th June

Wednesday 17th June

Monday 22nd June

Thursday 25th June

Friday 26th June

Tuesday 7th July

Wednesday 8th July

Tuesday 21st July

Monday 24th August

16th October 2020

BFG Meeting 6.00pm

Wisbech Reads - Poetry Roadshow visits Blue Class

Purple Class Swimming Wk 6 of 6

Rainbow Class Trip

Purple Class Trip - Stibbington Victorian day

Yellow Class Trip - Stories of Lynn

Tempest Photography—Group Photos 9am

Lunchtime Co. Promotional Lunch; Happy Easter

BFG Easter Egg Hunt

Last day of term

Children return to school

Bank Holiday

KS1 quizzes (SATs) - (2 weeks)

KS2 SATs

PGL—Parent Information Session 4.30—5.30

Last day of term

Children return to school

Year 1 Phonic Tests

Year 4 Time Table Checks - exact dates to be confirmed

Y5 & Y6 PGL Residential Trip

NHS Vision Screening – Rainbow Class

CCC Reception & Y6 Height and Weight Checks

Bags 2 Schools - Collection

Last order date for uniform – delivery by 13th July

DMA Year 6 Transition Days

DMA Year 6 Transition Days

Last day of term

Last order date for uniform – delivery by 4th September

BFG Disco KS1 6-7, KS2 7.15-8.15