



Important Dates

| | |
|--------------|---|
| 12th May | Oak Class - Woodland Session pm |
| 14th May | Elder Class - Woodland Session pm |
| 15th May | School Disco and Laurel Class - Woodland Session pm |
| 20th May | Cedar Class - Woodland Session pm |
| 22nd May | Crazy Hair Day - Arranged by the BFG |
| 22nd May | School closes for Half Term holiday |
| 1st June | Pupils return to school |
| 1st-3rd June | Residential Trip to Shacklewell Hollow Yr6 |
| 5th June | Yr 5 Wisbech Reads Festival |
| 8th June | Yr 1 Wisbech Reads Festival |

Dear Parents/Carers,

Welcome to this week's newsletter.

Next week, we see the start of the national SATs testing for our Year 6 pupils. The children have been working really hard since starting in Year 6. We all know the pressure that can surround this week. However, it is crucial to remind our children, and ourselves, that SATs don't measure how talented they are at art, music, or sports; the kindness in their hearts; their creativity and brilliant imaginations; how they make friends smile or look out for others; their resilience or emotional intelligence. These tests do not measure who they are, only what they have learnt and can recall on a particular day.

We are incredibly proud of how far they have come this year and the amazing and unique individuals they are growing into. I would like to say a big 'thank you' to Miss Summers and Mrs Calver for giving them the very best in preparation for these tests. I wish all Year 6, the very best of luck, but more importantly, I want them to know that we are incredibly proud with all their hard work and progress. Good luck, Year 6, do your best, that's all anyone can ask of you. You've got this!

Wishing you all a lovely weekend.

Mrs Munday
(Headteacher)

OFSTED REPORT

This week you should have received an email with a copy of our recent OFSTED report, which will soon be published on the OFSTED website. We are very pleased that the inspection team identified the hard work and improvements we have made over time. There are so many things to celebrate about our school, and I am delighted that they recognised many of these, including the work on OPAL, our outdoor learning environment, our inclusive school, and the personal and wellbeing provision we provide to our pupils.

Comments such as "Staff are unanimous in their support for leaders and their actions" and "Staff and pupils speak highly of the school's caring culture" really do make us realise what a wonderful environment it is for our children to learn and for us all to work in.

Of course, there are always areas to develop. Although the report mentions that there are times when difficult conversations need to be had, we truly value our parents' views and are always trying to find ways to improve parental involvement in the school. We have developed this area over the years, but we are always open to suggestions to help us improve further. Please do get in touch if you have any ideas, we would love to hear from you.

Mrs Munday

SATS - ELDER CLASS

SATS Week Timetable:- Monday 11th May to Thursday 14th May 2026:

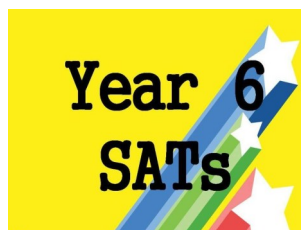
Monday 11th May - English grammar, punctuation and spelling

Tuesday 12th May - English reading.

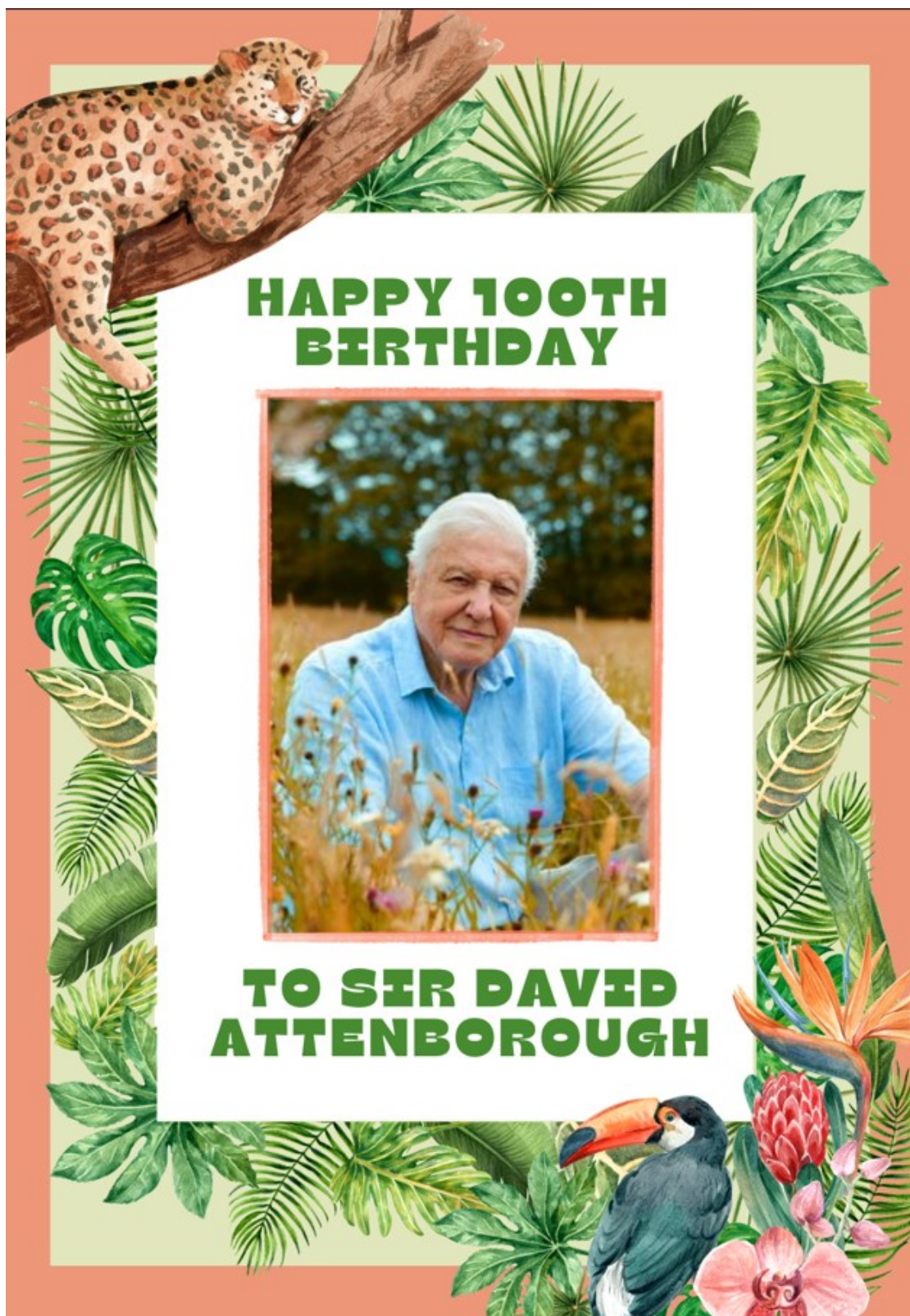
Wednesday 13th May - Mathematics Paper 1: Arithmetic Paper 2: Reasoning

Thursday 14th - May Mathematics Paper 3: Reasoning

Please remember that there is breakfast for the children on the morning of each day. This starts at 8:15am.



Look out for a special newsletter on Monday, showing our celebrations that we had today.



BEAUPRE'S SUNFLOWER COMPETITION

Exciting news! Our sunflower competition has officially launched!

Chestnut Class enjoyed working very hard in class, potting up cups and seeds for the whole school and now everyone should have their own sunflower to grow and nurture. A huge thank you to all the staff and children involved with this! We would recommend growing your sunflowers in a sunny, warm spot for at least a few weeks until they are big and strong enough to be planted outside. Please see the poster for more details. Good luck everyone, we cannot wait to

see your sunflowers!



BEAUPRE'S SUNFLOWER COMPETITION

Each child will be sponsored to grow a sunflower and all money raised will go towards our OPAL project.

Sunflowers must be measured on or before 13th July, 2026 using a tape measure from floor to the top of the flower head.

You must take a photo of your sunflower with you standing next to it and email it to the office by the 13th July, along with your sponsor money and sponsor forms.

Awards & Celebrations

A graphic for 'House Points' showing five cartoon children (two boys and three girls) holding a banner that says 'House Points'.

1st **Marsh Harriers**

2nd **Cranes**

3rd **Swans**

4th **Kingfishers**

Attendance

For the week ending Friday 1st May, Chestnut and Maple Classes' attendance was over 96% and they have received a star.

Chestnut

Cedar

Laurel

Maple

Oak

Elder

The winner of the 100% attendance is

Finley in Laurel Class

Above and Beyond

This week's Above and Beyond goes to...

Noah in Maple Class for showing a kind and considerate manner to others.

The logo for 'above beyond' features a yellow star above the text 'above beyond' in a blue, cursive font.

Outside Achievements



Macie in Laurel Class received 5 medals and 1 trophy for being 'Best in Group' at her gymnastics competition.

Well done!

Parent Information

WOODLAND SESSIONS

Please find below the dates and times for the woodland sessions for each class this half-term. These sessions are for pupils only, parents will be invited to our woodland sessions next half term.

| Class | Session Date | Session Time |
|--------|--------------------------|--------------|
| Cedar | Wed 20 th May | Afternoon |
| Laurel | Fri 15 th May | Afternoon |
| Maple | Thu 7 th May | Afternoon |
| Oak | Tue 12 th May | Afternoon |
| Elder | Thu 14 th May | Afternoon |

Please ensure your child has appropriate clothing for their woodland session, including wellies and waterproofs for wet weather, as well as hats for hot weather. Please apply any sunscreen at home.



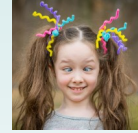
BFG News



Forthcoming Dates



15th May - School Disco



22nd May - Crazy Hair Day

Keep a look out on here and the BFG Facebook page.

CRAZY HAIR DAY



FRIDAY 22ND MAY 2026

Wear crazy hair to school for a £1 donation!

All funds go towards the BFG school pond project.

Please do not make any permanent hair changes that conflict with the school's uniform policy.

BEAUPRE COMMUNITY PRIMARY
HOSTED BY THE BFG



FRIDAY 15TH MAY 2026

YEARS REC, 1,2,3
5.45PM - 6.45PM

YEARS 4,5,6
7.00PM-8.00PM

TICKET - £3

INCLUDES UNLIMITED SQUASH

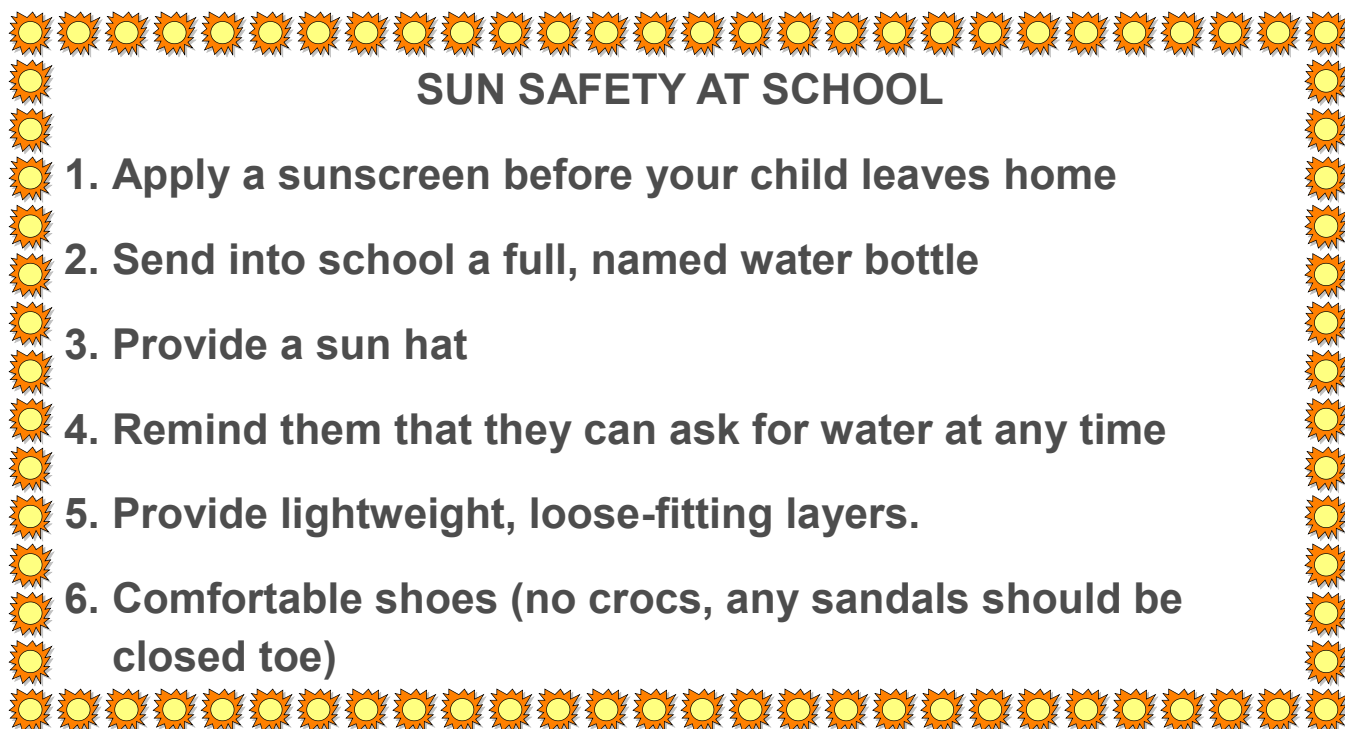
REFRESHMENTS AVAILABLE TO PURCHASE AT THE DISCO



Important Dates



| | |
|----------------------------|--|
| 2026 | |
| 19th May 2026 | Maypole Dance - Whole School Event |
| 21st May 2026 | Reading Café 2:15pm |
| 22nd May 2026 | BFG Crazy Hair Day. Details to follow. Break up for Half Term |
| 1st June 2026 | Pupils return to school |
| 1st-3rd June 2026 | Residential Trip to Shacklewell Hollow Yr6 |
| 5th June 2026 | Yr 5 Wisbech Reads Festival |
| 8th June 2026 | Yr 1 Wisbech Reads Festival |
| 9th June 2026 | Reception Vision Screening 9:30a.m. |
| 16th June 2026 | Sports Day a.m |
| 19th June 2026 | Reserve Sports Day |
| 17th June 2026 | Yr 6 Wisbech Safety Zone trip |
| 18th June | Yr 5 STEM Conference event at TCA |
| 22nd June 2026 | Area Athletics Event at TCA KS2 |
| 2nd July 2026 | Year 4 Science Trip, Wisbech |
| 3rd July 2026 | Year 3 Bikeability |
| 13th–17th July 2026 | Year 5 Bikeability (Test on Friday TBC) |
| 16th July 2026 | Reading Café 2:15pm |
| 16th July 2026 | Year 5 Experience Day at MHS 9:15-2:40pm |
| 17th July 2026 | Break up for the Summer Holidays |
| 2026-2027 | |
| 3rd September 2026 | School re-opens |
| 24th November 2026 | Flu Vaccine (1st Session) |
| 4th December 2026 | Flu Vaccine (Mop Up Session) |



SUN SAFETY AT SCHOOL

1. Apply a sunscreen before your child leaves home
2. Send into school a full, named water bottle
3. Provide a sun hat
4. Remind them that they can ask for water at any time
5. Provide lightweight, loose-fitting layers.
6. Comfortable shoes (no crocs, any sandals should be closed toe)

OUT OF THIS WORLD



21st May

'Rocket Dog' Hot Dog
with Potato Salad, Carrot Pepper
and Cucumber Sticks

Or

Cheese and Tomato Quiche
with Potato Salad, Carrot, Pepper

and Cucumber Sticks

And
Cosmic
Chocolate
Brownie



THURSDAY 21ST MAY
LUCKY PLATE

Is it YOUR lucky day?

6 PRIZES TO
BE WON!

No peeping
under your
plate until
you're done!

WINNERS SKIP THE LUNCH
QUEUE ON FRIDAY TOO!

Find a
ticket to
WIN a prize!



Beaupre Primary Academic Calendar 2026/27

| September 2026 | | | | | | | | October 2026 | | | | | | | | November 2026 | | | | | | | | December 2026 | | | | | | | |
|----------------|----|----|----|----|----|----|----|--------------|----|----|----|----|----|----|----|---------------|----|----|----|----|----|----|----|---------------|----|----|----|----|----|----|----|
| wk | Mo | Tu | We | Th | Fr | Sa | Su | wk | Mo | Tu | We | Th | Fr | Sa | Su | wk | Mo | Tu | We | Th | Fr | Sa | Su | wk | Mo | Tu | We | Th | Fr | Sa | Su |
| 36 | | 1 | 2 | 3 | 4 | 5 | 6 | 40 | | | | 1 | 2 | 3 | 4 | 44 | | | | | | | 1 | 49 | | 1 | 2 | 3 | 4 | 5 | 6 |
| 37 | 7 | 8 | 9 | 10 | 11 | 12 | 13 | 41 | 5 | 6 | 7 | 8 | 9 | 10 | 11 | 45 | 2 | 3 | 4 | 5 | 6 | 7 | 8 | 50 | 7 | 8 | 9 | 10 | 11 | 12 | 13 |
| 38 | 14 | 15 | 16 | 17 | 18 | 19 | 20 | 42 | 12 | 13 | 14 | 15 | 16 | 17 | 18 | 46 | 9 | 10 | 11 | 12 | 13 | 14 | 15 | 51 | 14 | 15 | 16 | 17 | 18 | 19 | 20 |
| 39 | 21 | 22 | 23 | 24 | 25 | 26 | 27 | 43 | 19 | 20 | 21 | 22 | 23 | 24 | 25 | 47 | 16 | 17 | 18 | 19 | 20 | 21 | 22 | 52 | 21 | 22 | 23 | 24 | 25 | 26 | 27 |
| 40 | 28 | 29 | 30 | | | | | 44 | 26 | 27 | 28 | 29 | 30 | 31 | 48 | 23 | 24 | 25 | 26 | 27 | 28 | 29 | | 28 | 29 | 30 | 31 | | | | |
| | | | | | | | | | | | | | | | 49 | 30 | | | | | | | | | | | | | | | |

| January 2027 | | | | | | | | February 2027 | | | | | | | | March 2027 | | | | | | | | April 2027 | | | | | | | |
|--------------|----|----|----|----|----|----|----|---------------|----|----|----|----|----|----|----|------------|----|----|----|----|----|----|----|------------|----|----|----|----|----|----|----|
| wk | Mo | Tu | We | Th | Fr | Sa | Su | wk | Mo | Tu | We | Th | Fr | Sa | Su | wk | Mo | Tu | We | Th | Fr | Sa | Su | wk | Mo | Tu | We | Th | Fr | Sa | Su |
| 1 | | | | | 1 | 2 | 3 | 6 | 1 | 2 | 3 | 4 | 5 | 6 | 7 | 10 | 1 | 2 | 3 | 4 | 5 | 6 | 7 | 14 | | | | 1 | 2 | 3 | 4 |
| 2 | 4 | 5 | 6 | 7 | 8 | 9 | 10 | 7 | 8 | 9 | 10 | 11 | 12 | 13 | 14 | 11 | 8 | 9 | 10 | 11 | 12 | 13 | 14 | 15 | 5 | 6 | 7 | 8 | 9 | 10 | 11 |
| 3 | 11 | 12 | 13 | 14 | 15 | 16 | 17 | 8 | 15 | 16 | 17 | 18 | 19 | 20 | 21 | 12 | 15 | 16 | 17 | 18 | 19 | 20 | 21 | 16 | 12 | 13 | 14 | 15 | 16 | 17 | 18 |
| 4 | 18 | 19 | 20 | 21 | 22 | 23 | 24 | 9 | 22 | 23 | 24 | 25 | 26 | 27 | 28 | 13 | 22 | 23 | 24 | 25 | 26 | 27 | 28 | 17 | 19 | 20 | 21 | 22 | 23 | 24 | 25 |
| 5 | 25 | 26 | 27 | 28 | 29 | 30 | 31 | | | | | | | | 14 | 29 | 30 | 31 | | | | | 18 | 26 | 27 | 28 | 29 | 30 | | | |
| | | | | | | | | | | | | | | | | | | | | | | | | | | | | | | | |

| May 2027 | | | | | | | | June 2027 | | | | | | | | July 2027 | | | | | | | | August 2027 | | | | | | | |
|----------|----|----|----|----|----|----|----|-----------|----|----|----|----|----|----|----|-----------|----|----|----|----|----|----|----|-------------|----|----|----|----|----|----|----|
| wk | Mo | Tu | We | Th | Fr | Sa | Su | wk | Mo | Tu | We | Th | Fr | Sa | Su | wk | Mo | Tu | We | Th | Fr | Sa | Su | wk | Mo | Tu | We | Th | Fr | Sa | Su |
| 18 | | | | | | 1 | 2 | 23 | | 1 | 2 | 3 | 4 | 5 | 6 | 27 | | | | 1 | 2 | 3 | 4 | 31 | | | | | | | 1 |
| 19 | 3 | 4 | 5 | 6 | 7 | 8 | 9 | 24 | 7 | 8 | 9 | 10 | 11 | 12 | 13 | 28 | 6 | 6 | 7 | 8 | 9 | 10 | 11 | 32 | 2 | 3 | 4 | 5 | 6 | 7 | 8 |
| 20 | 10 | 11 | 12 | 13 | 14 | 15 | 16 | 25 | 14 | 15 | 16 | 17 | 18 | 19 | 20 | 29 | 12 | 13 | 14 | 15 | 16 | 17 | 18 | 33 | 9 | 10 | 11 | 12 | 13 | 14 | 15 |
| 21 | 17 | 18 | 19 | 20 | 21 | 22 | 23 | 26 | 21 | 22 | 23 | 24 | 25 | 26 | 27 | 30 | 19 | 20 | 21 | 22 | 23 | 24 | 25 | 34 | 16 | 17 | 18 | 19 | 20 | 21 | 22 |
| 22 | 24 | 25 | 26 | 27 | 28 | 29 | 30 | 27 | 28 | 28 | 30 | | | | 31 | 26 | 27 | 28 | 29 | 30 | 31 | 35 | 23 | 24 | 25 | 26 | 27 | 28 | 29 | | |
| 23 | 31 | | | | | | | | | | | | | | | | | | | | | | 36 | 30 | 31 | | | | | | |
| | | | | | | | | | | | | | | | | | | | | | | | | | | | | | | | |

| | | |
|-----------------|---------------------------|-------------|
| Weekends | Staff Training/Inset Days | School Days |
| School Holidays | Bank Holidays | |

LIVE friendship event for primary schools, by Pet Education Partnership



Friendship event for primary schools

Wednesday 13 May, 1.30 – 2.30pm and repeated on **Friday 15 May, 1.30 – 2.30pm**.
FREE event hosted on Zoom.

Looking to teach children to be kind, respectful and understanding, not just with people but with animals too? This free event exploring friendship is packed full of interactive activities – perfect for whole class viewing and assemblies, supporting PSHE, Science and Relationships Education.

Hosted by the Pet Education Partnership, a collaboration between the UK's leading animal welfare charities including Dogs Trust, RSPCA, Blue Cross and Woodgreen.

Please click on the link below to book onto this event.

[Friendship, Pets and Me Tickets, Multiple dates | Eventbrite](#)