



## Important Dates

<b>16th-20th April</b>	<b>School Book Fair</b>
<b>23rd April</b>	<b>Cedar Class 1 of 5 swimming sessions</b>
<b>4th May</b>	<b>School Closed - Early May Bank Holiday</b>
<b>5th May</b>	<b>School re-opens</b>
<b>7th May</b>	<b>Maple Class - Woodland Session pm</b>
<b>12th May</b>	<b>Oak Class - Woodland Session pm</b>
<b>14th May</b>	<b>Elder Class - Woodland Session pm</b>
<b>15th May</b>	<b>School Disco and Laurel Class - Woodland Session pm</b>
<b>20th May</b>	<b>Cedar Class - Woodland Session pm</b>
<b>22nd May</b>	<b>Crazy Hair Day - Arranged by the BFG</b>

Dear Parents/Carers,

Welcome to this week's newsletter.

I trust that you all had a restful Easter Break. The children have returned to school with a positive attitude, enthusiasm and politeness towards all, which has been an excellent start to the final term of the school year.

The warmer weather is upon us and we look forward to more sunny days ahead. With this in mind, I would like to remind you to ensure that uniform is named, particularly jumpers, cardigans and coats, as these are often the items which children take off and leave in random places. We still have lots of lost property with no names, and I encourage you to come into school to look through these items. We are very aware that consistently replacing items for your child is an expense, and we try desperately to teach the children about looking after their own property. Your support in reinforcing this message at home is invaluable.

I would also ask that children have a named drinks bottle to keep them hydrated, particularly during breaks and lunchtimes when they like to run around and get hot. Bottles should contain water and can be refilled at school throughout the day. Children may bring juice at lunchtimes if they wish.

This term is always very busy, so please keep an eye on the newsletters, text messages and emails for information on upcoming events.

Have a wonderful weekend.

**Mrs Munday** (Headteacher)

# OPAL News



Exciting news! Get ready to play...

## OPAL BINGO IS GETTING READY TO LAUNCH!

<p>Each class is going to be given an OPAL bingo card with resources we need to expand and replenish our OPAL play.</p> 	<p>Children are invited to bring in items from their class bingo card from <b>MONDAY 20<sup>th</sup> APRIL</b>. The last collection will be on <b>FRIDAY 8<sup>th</sup> MAY</b>. We will update each class bingo card in our newsletter.</p> 	<p>Please drop off items in the creative station when the school opens in the mornings. Between 8.30 and 8.40am.</p> 
<p>When enough of each item has been donated from each class, it will be ticked off on the display in our main corridor.</p> 	<p>The class who brings in all of the items from their bingo card, or the most, will receive extra play one afternoon, with an ice cream lolly!</p> 	<p><b>IMPORTANT NOTE</b> Please only donate items that we can use. Nothing broken and in a good enough condition that will be safe to play with! When we can allow, staff will be on the creative station to check resources as they come in for quality assurance.</p> 

# WOODLAND SESSIONS

Please find below the dates and times for the woodland sessions for each class this half-term. These sessions are for pupils only, parents will be invited to our woodland sessions next half term.

Class	Session Date	Session Time
Cedar	Wed 20 <sup>th</sup> May	Afternoon
Laurel	Fri 15 <sup>th</sup> May	Afternoon
Maple	Thu 7 <sup>th</sup> May	Afternoon
Oak	Tue 12 <sup>th</sup> May	Afternoon
Elder	Thu 14 <sup>th</sup> May	Afternoon

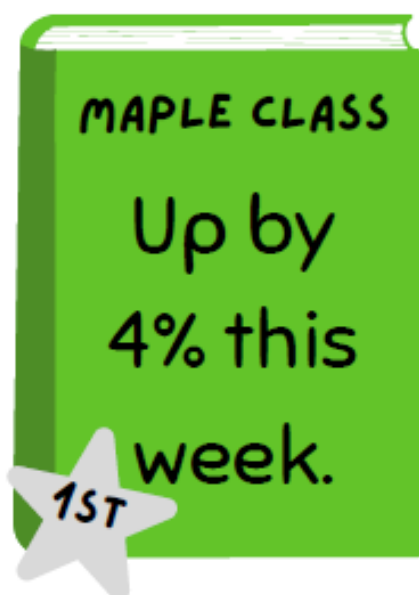
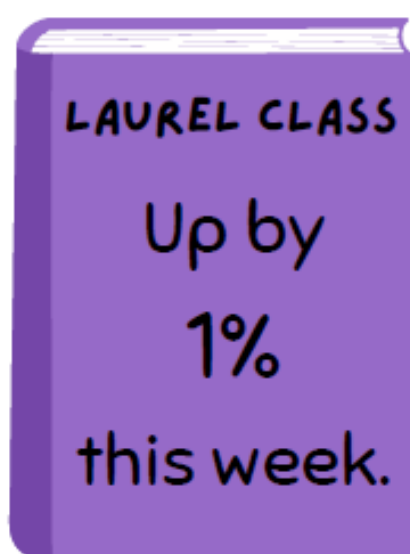
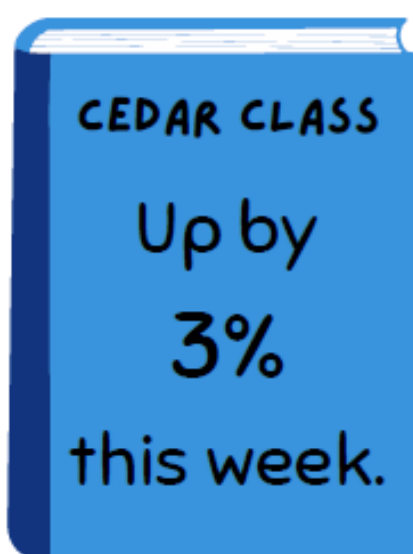
Please ensure your child has appropriate clothing for their woodland session, including wellies and waterproofs for wet weather, as well as hats for hot weather. Please apply any sunscreen at home.

# REMARKABLE READING

This year, we have set our accelerated reader users a challenge – which class can improve their reading the most this year?

At the end of each half term, the class who has improved their word count by the highest percentage will win extra playtime!

Lets see how much we have read this week!



Log into your AR Home Connect account to see your child's personal word count, reading level and more!

# Awards & Celebrations



## Attendance

For the week ending Friday 27th March, Laurel, Maple and Elder Classes' attendance were over 96% and they have received a star.

Chestnut

Cedar

Laurel

Maple

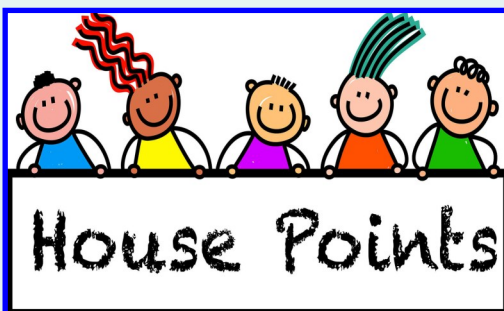
Oak

Elder



**The winner of the 100% attendance prize is**

**Maya in Elder Class**



1st Swans

2nd Cranes

3rd Marsh Harrier

4th Kingfishers



## Scholastic Book Fair

16<sup>th</sup> – 20th April (School Hall)

Every book you buy earns free books for our school.

**This year, we will ONLY be taking CASH payments at the book fair. Online orders must be done at home.**

If you can't attend the Fair in person, you child can order books via a Wish List - children will be given this form to bring home with their selections.

**ORDERS ONLINE CANNOT BE DONE UNTIL THE DAY OF THE BOOK FAIR.**

Each child will receive a £1 World Book Day voucher on Monday 2nd March, which can be used to purchase a book from the Book Fair or children can swap their £1 token for any of the £1 books or get £1 off a full price title, any full price book or audiobook (as long as the book or audiobook costs at least £2.99) at participating booksellers.

[Find your nearest participating retailer.](#)

**The BFG will be selling refreshments.**



# Outside Achievements

**Olivia in Oak Class received lots of rosettes from a Dog Show with her dog Willow.**



**Macie in Laurel Class had a gymnastics competition . She received a 1st on vault, 2nd on floor and 6th on bars. She has qualified for regionals in Ipswich in July.**

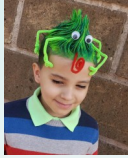


**Lilly in Maple Class went to Birmingham NEC WKO Arnold Intercontinental Kickboxing Championships 2026. Lilly came second and received a silver medal.**

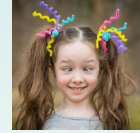




# BFG News



## Forthcoming Dates



**15th May - School Disco**

Lots of other exciting events planned : Crazy Hair Day and online raffles.

*Keep a look out on here and the [BFG Facebook page](#).*



# Important Dates



<b>2026</b>	
<b>16th-21st April 2026</b>	<b>Rearranged Book Fair in School Hall 3:15pm-4:00pm</b>
<b>21st April –23rd June</b>	<b>Brick Club - Tuesday Lunchtimes for specific pupils ONLY</b>
<b>30th April 2026</b>	<b>Yr 5 Big Read &amp; Write trip</b>
<b>4th May 2026</b>	<b>School Closed Early May Bank Holiday</b>
<b>5th May 2026</b>	<b>School re-opens</b>
<b>15th May 2026</b>	<b>School Disco</b>
<b>19th May 2026</b>	<b>Maypole Dance - Whole School Event. Details to follow</b>
<b>21st May 2026</b>	<b>Reading Café 2:15pm</b>
<b>22nd May 2026</b>	<b>BFG Crazy Hair Day. Details to follow</b>
<b>1st June 2026</b>	<b>Yr 1 Wisbech Reads Festival</b>
<b>1st-3rd June 2026</b>	<b>Residential Trip to Shacklewell Hollow Yr6</b>
<b>8th June 2026</b>	<b>Yr 5 Wisbech Reads Festival</b>
<b>9th June 2026</b>	<b>Reception Vision Screening 9:30a.m.</b>
<b>16th June 2026</b>	<b>Sports Day a.m TBC</b>
<b>19th June 2026</b>	<b>Reserve Sports Day TBC</b>
<b>17th June 2026</b>	<b>Yr 6 Wisbech Safety Zone trip</b>
<b>18th or 19th June</b>	<b>Yr 5 STEM Conference event at TCA</b>
<b>22nd June 2026</b>	<b>Area Athletics Event at TCA</b>
<b>3rd July 2026</b>	<b>Year 3 Bikeability</b>
<b>13th–17th July 2026</b>	<b>Year 5 Bikeability (Test on Friday TBC)</b>
<b>16th July 2026</b>	<b>Reading Café 2:15pm</b>
<b>16th July 2026</b>	<b>Year 5 Experience Day at MHS 9:15-2:40pm</b>
<b>17th July 2026</b>	<b>Break up for the Summer Holidays</b>
<b>2026-2027</b>	
<b>1st September 2026</b>	<b>School re-opens (New term dates TBC)</b>



**Marshland High School**  
Specialist Science College



# *Year 5 High School*

## *Experience Day*

Thursday 16<sup>th</sup> July  
9.15am – 2.40pm

Experience a day in the life of a  
Marshland High School student!

Fun lessons in many exciting subjects including:

**Art Science Music  
Languages PE**

Registration forms will be sent out to Primary Schools in the  
coming weeks and will need to be returned by 15<sup>th</sup> June 2026.

For further information please email: [s.swinburn@marshlandhigh.co.uk](mailto:s.swinburn@marshlandhigh.co.uk)