



Important Dates

9th-25th Sept	Harvest Festival collection
22nd Sept	Laurel Class walk to Upwell Church a.m.
23rd Sept	The Wisbech Academy Open Evening 5.30-7.30pm
25th Sept	Harvest Festival assembly. Last date for donations
30th Sept	Guitar lessons start
30th Sept	Dance Workshop. Whole School. All children to come into school in P.E. kit
10th Oct	World Mental Health Day - Pupils to wear something yellow. £1 donation.
13th Oct	Individual Photographs by Tempest Photography
17th Oct	Visitor in assembly - Peter Burrows from POSH
17h Oct	Woodland Session - Laurel Class p.m.

Week 3

Welcome to this week's newsletter.

What a lovely week it has been! I have been so impressed to see our new Year Sixes demonstrating the responsibility and good conduct that is expected of them, being the eldest children in the school. The manifestos they created for the house captain elections were very impressive and I feel sure that the captains each house elected will make us all very proud in their new positions.

This week was also the start of our Accelerated Reader contest, and watching the word counts rise has been encouraging to see. I hope that as the term progresses, parents and families will support us in making this a success through reading regularly at home.

Finally, I would like to thank all that have already donated to our upcoming harvest festival assembly. The food donated will go to the Wisbech Food Bank next week and will benefit many in our local community. If you have not had a chance to donate, there is still time. Donations do not close until Thursday morning next week and even one item can help someone in need.

If you have any questions, please contact the school office. We are all here to help you.

Michelle Munday (Headteacher)

Roles and Responsibilities – Year 6

The new Year 6 have been embracing the roles and responsibilities that come with the transition to their final year of primary school. Following peer mediation training, children were given the opportunity to apply for the available positions for peer mediators and we have pleasure in sharing some of their impressive applications.

Although the roles of class ambassadors and school councillors are present in all year groups across the school, House Captains are unique to Year 6 and the children thoroughly embraced the challenge of drafting a manifesto, presenting this to their house and awaiting the prospective votes. Well done for everyone who participated in this and congratulations to those who were successfully appointed.

Additionally, children have been given the opportunity to apply for the role of librarian.

Our 2025/26 House Captains are:

Swans – Delilah and Alfie

Kingfishers – Oliver and Sidney



Cranes – Riley and Harrison

Marsh Harriers – Evie and Lewis



Our 2025/26 Peer Mediators are:



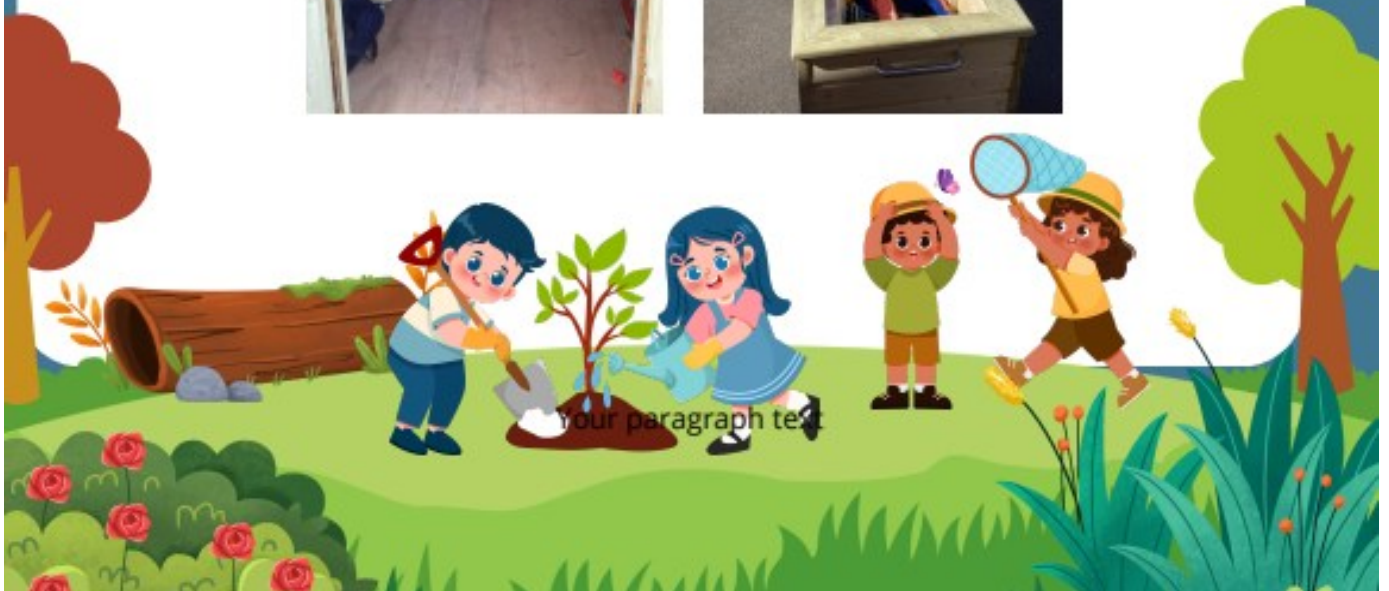
Belle, Sidney, Lois, Maya, Luci, Riley, Rafe, Lilly, Delilah, Ellie, Jaxon and Harrison



Exciting News from Opal!

We're thrilled to share that Opal has a fantastic new addition—a brand new shed and wheeled tubs to help us store all our wonderful Opal resources! This much-needed storage solution is especially handy as we prepare for our upcoming Launch 2 - filled with even more fun and engaging items for the children.

Despite the temperamental weather this week, the children have continued to enjoy themselves outdoors. We're looking forward to introducing even more exciting resources in the weeks to come!





Premier



AFTER SCHOOL ACTIVITY TIMETABLE

Beaupre Primary School



	MONDAY	TUESDAY	WEDNESDAY	THURSDAY	FRIDAY
THEME	MESSY MONDAYS	TALENT TUESDAY'S	WORLD WEDNESDAY	THEATRICAL THURSDAY	FANTASTIC FRIDAY
ARRIVAL	Class Collection & Afternoon Brief	Class Collection & Afternoon Brief	Class Collection & Afternoon Brief	Class Collection & Afternoon Brief	Class Collection & Afternoon Brief
CREATIVITY	Arts & Crafts Construction Puzzle & Board Games	Arts & Crafts Construction Puzzle & Board Games	Arts & Crafts Construction Puzzle & Board Games	Arts & Crafts Construction Puzzle & Board Games	Arts & Crafts Construction Puzzle & Board Games
PHYSICAL	Football Manhunt	Dodgeball Benchball	Archery Tagging Games	Gymnastics Dance	Choice
LEARNING	Sensory Play Baking Finger Painting	Inventors Researchers Sports People	Around the World	Beaupre's Got Talent Show	Movie night



www.premier-education.com



After School Activities

Please see Premier Education's new after school activity timetable Premier Education provide some amazing before and after school activities for your children. If you would like a free session, please email hcollison@premier-education.com



REMARKABLE READING

This year, we have set our accelerated reader users a challenge – which class can improve their reading the most this year?

At the end of each half term, the class who has improved their word count by the highest percentage will win extra playtime!

Lets see how much we have read this week!

CEDAR CLASS

Up 54%
this week

7,360 words to
11,312 words

LAUREL CLASS

Up 231%
this week

1,608 words to
5,321 words

MAPLE CLASS

Up 212%
this week

21,826 words to
68,037 words

OAK CLASS

Down 33%
this week

164,560 words to
109,835 words

ELDER CLASS

Down 75%
this week

123,958 words to
30,462 words

Log into your AR Home Connect account to see your child's personal word count, reading level and more!

Awards & Celebrations



Attendance

For the week ending Friday 12th September, Chestnut, Cedar, Laurel, Maple and Oak classes' attendance were over 96% and they have all received a star.

Chestnut ★★

Cedar ★★

Laurel ★

Maple ★★

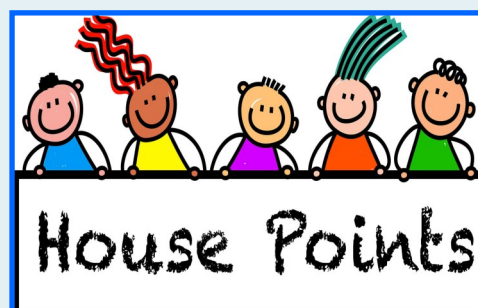
Oak ★

Elder

The winner of the 100% attendance prize for week ending 12th of September is Freddy in Cedar Class.

Above and Beyond

This week's Above and Beyond goes to Sophia-Grace in Chestnut Class for her caring manner towards younger children.



- 1st **Cranes**
- 2nd **Marsh Harriers**
- 3rd **Swans**
- 4th **Kingfishers**

Awards & Celebrations



Outside Achievements



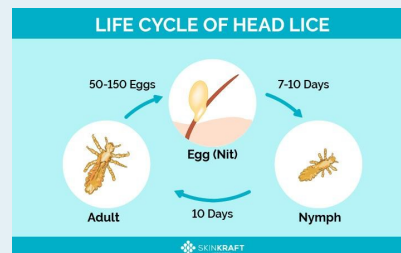
Max in Chestnut Class received a football trophy for being 'Player of the Week'. Well done Max!

Parent Information



Head Lice

We have had a confirmed case of head lice in school. Please can you check your child and treat if necessary. All long hair should be tied up.



Parent Information

School Photographs

Tempest Photography will be in school on **Monday 13th October 2025** to take individual photos of the children.

If your child has P.E on a Monday, please ensure they have a school top and jumper on and P.E kit on below the waist for the photos.



YOUNGMINDS
Hello Yellow
FRIDAY 10 OCT

**Wear it loud.
Wear it proud.**

Wear yellow this World Mental Health Day, 10th October, and donate to YoungMinds to support young people's mental health.

#HelloYellow **M&S | YOUNGMINDS**
YoungMinds, registered Charity in England (1285685) and Scotland (SC039700)

World Mental Health Day - Friday 10th October.

All pupils to wear something yellow eg. yellow t-shirt, yellow jumper, yellow socks or yellow hair scrunchie. This is to be worn with normal school uniform. £1.00 minimum donation to be given to the class teacher.

Important Information



The Wisbech Academy

OPEN EVENING TUESDAY 23RD SEPTEMBER 5.30PM-7.30PM

Join us in our brand-new home and discover how we empower students with the choice, opportunity, and character to shape their futures and make a positive difference in the world.

With a strong, inclusive ethos and a curriculum built around values and personal growth, we're proud to nurture both academic success and exceptional character.

Principals Address at 5.30pm

www.thewisbechacademy.org

Weasenham Lane
Wisbech
PE13 2RU

01945 407909



Transform With Ambition



WISBECH
GRAMMAR SCHOOL

WHERE
GENERATIONS
SUCCEED

OPEN MORNING

Saturday 27 September 0930 - 1230

Years 5 & 6 for entry 2026/27

- ◆ Outstanding record of academic success
- ◆ Exceptional Pastoral Support
- ◆ Extensive enrichment opportunities
- ◆ Flexi-Boarding

THE
GOOD
SCHOOLS
GUIDE

- ◆ Bursaries Available
- ◆ Scholarships Available
- ◆ School transport routes across Norfolk, Cambridgeshire and Lincolnshire including Hunstanton and King's Lynn

To book your place visit: wisbechgrammar.com



✉ admissions@wisbechgrammar.com

☎ 01945 586750

WISBECH
GRAMMAR SCHOOL



RECEPTION 2026 OPEN DAY

Wednesday 15th Oct 2025

9:30-10:00 & 3:30 - 4:00
Reception Classroom

Tours will be available
in small groups on the
above date. Please
contact the school
office to book a tour.

Calling Beaupre parents/carers/grandparents, friends of the school...



**Would you like to come into
school regularly to read with
children?**

Can you spare a couple of hours each week?

Would you like to nurture children's early reading?

Would you like to make a difference?

**Are you thinking of experience that could benefit
a future career in a school?**

**Would you like to be more involved as a member of
our school community?**

For further details,

**please contact the School Office and to
arrange a DBS check.**



Calling all Beaupre parents/carers/grandparents...



You are invited, each half-term, to attend our
reading Cafes with your children.

Sessions start at 2.15pm on the last Thursday of each half-term.

Sessions start with refreshments in the hall and a brief presentation linked to reading. Parents are then invited to join their children's classes to share stories, reading and activities related to reading, until the end of the school day.

Please support this new initiative.

There is no need to book, please just turn up.

We look forward to welcoming you.

Here are the dates for your diary:

Autumn 1 – 23rd October 2025

Autumn 2 – 18th December 2025

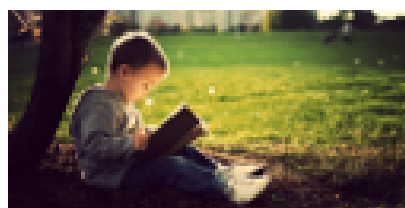
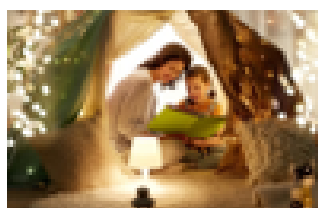
Spring 1 – 12th February 2026

Spring 2 – 26th March 2026

Summer 1 – 21st May 2026

Summer 2 – 16th July 2026

If any parents/carers/grandparents/friends of the school are interested in supporting the school further with reading and would like to volunteer to listen to children read in school, please contact the school office.





Harvest festival



Collection date

9th-25th September 2025

Once again this year we are donating to the Wisbech Foodbank. Please can we have donations to school from Tuesday 9th to 25th September.

Please see below the shopping list of non-perishable food items they require:-

Tinned Fish

Tea bags 80's

Tinned Rice Pudding

Cereal

Tinned Soup

Chocolate treats (Mars etc)

Tinned Tomatoes

Thank you for your help



Church Drove, Outwell, Wisbech, Cambs PE14 8RH Tel: 01945 772439 Email: office@beaupre.cambs.sch.uk
Web: www.beaupreprimary.co.uk Headteacher: Mrs Michelle Munday

PLAY TEAM MEMBER - MIDDAY VACANCY

Hours of Work – Permanent Term Time Only

Monday to Friday 1.15 hours per day

12.15pm – 1.30pm

Pay – Between £12.65-12.85 per hour (depending on experience)

Required ASAP

Closing date for applications – 22nd September at midday

We are looking for a positive and caring individual who is a team player and multi tasker, to ensure the security and care of the pupils in a safe and stimulating environment and to promote active and creative play experience so that all our children have meaningful lunchtime play every day.

We are a local school looking to appoint a Play Team Member for our OPAL lunchtime provision, to join our friendly, committed and supportive team.

We can offer you:

- Wonderful, happy and hard-working children
- A supportive school community
- A school with drive and passion for the future
- OPAL training

We wish to appoint someone who:

- Has a kind and approachable manner
- Is patient in supporting the children, adopting our therapeutic thinking
- Will engage positively with children of all ages
- Is committed to working as part of a team
- Flexible, calm and enthusiastic

For an application pack please contact Mrs Rachel Taylor-Shaw – School Business Manager or email office@beaupre.cambs.sch.uk.

Beaupré School has a commitment to safeguarding and promoting the welfare of children and require all staff to demonstrate this commitment in every aspect of their work.

This post is subject to an enhanced DBS clearance, pre-employment medical check and satisfactory references.



SENDIASS

Cambridgeshire, Peterborough & Rutland

Cambridgeshire, Peterborough & Rutland SENDIASS provides information, advice and support to parents, children and young people regarding Special Educational Needs and Disabilities.

SENDIASS offers:

- Impartial advice and information about all aspects of Special Educational Needs and Disabilities.
 - Advice and support for parents, children and young people who are navigating the Special Educational Needs processes.
- Advice and support for parents and young people to work collaboratively with schools, other educational settings, health and children's services, and other professionals involved in individual cases.
- Inform and signpost parents and young people to all available support services and organisations.
 - Advice and support for parents and young people in resolving disagreements in a timely manner and supporting through mediations and tribunals where necessary.

Please contact us for further information, advice and support.

Contact: 0300 365 1020

or email

Cambridgeshire & Rutland = sendiass@cambridgeshire.gov.uk

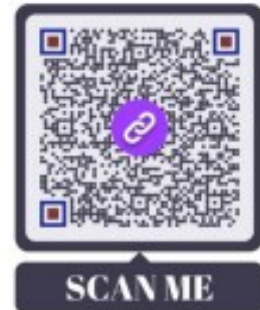
Peterborough = sendiass@peterborough.gov.uk

Apply now

for a Secondary school place for September 2026

Contact the Admissions Team by telephone 0345 045 1370

If your child will be aged 11 by **31st
August 2026**



For further information please visit
or contact your local School

[Secondary school admissions - September 2026 | Cambridgeshire County Council](#)

ALC2605, New Shire Hall, Emery Crescent, Enterprise Campus, Alconbury
Weald, PE28 4YE
or email admissions@cambridgeshire.gov.uk

Important Dates

2025-2026	
9th-25th Sept	Harvest Festival Collection period
25th Sept	Harvest Festival Assembly and last day for collection
30th Sept	Guitar lessons start
10th Oct	World Mental Health Day - wear something yellow. £1.00
13th Oct	Individual Photographs by Tempest Photography
17th Oct	Visitor in assembly - Peter Burrows from POSH
17th Oct	Woodland Session - Laurel Class p.m.
23rd Oct	Reading Café 2:15pm
24th Oct	School breaks up for half term
26th Nov	Flu Vaccines - Whole School
3rd Dec	Rec & Yr6 Height and Weight check a.m.
9th Dec	Flu Vaccines - Mop Up session
12th Dec	Woodland Session - Laurel Class p.m.
18th Dec	Reading Café 2:15pm
18th Dec	Pantomime - 'Rapunzel' performed by Purple Dreams
18th Dec	Reading Café 2:15pm
19th Dec	Break up for Christmas
24th Feb	Group/Class Photographs with Tempest
18th March	Yr 5 Planetarium Workshop
23rd March	Yr6 Careers Event at TCA
26th March	Reading Café 2:15pm
21st May	Reading Café 2:15pm
1st June	Yr1 Wisbech Reads Festival
1st-3rd June	Residential Trip to Shacklewell Hollow Yr6
8th June	Yr5 Wisbech Reads Festival
9th June	Reception Vision Screening 9:30a.m.
18th or 19th June	Yr5 STEM Conference event at TCA
22nd June	Area Athletics Event at TCA
3rd July	Year 3 Bikeability
13th July	Year 5 Bikeability
16th July	Reading Café 2:15pm
17th July	Break up for the Summer Holidays