



## Important Dates

18th March	Laurel Class - Woodland session pm. Parents are welcome to attend.
20th March	Cedar Class - Woodland session p.m. Parents are welcome to attend.
20th March	Mini Medics Workshop - Yr6
21st March	Comic Relief Day. Wear something red, donation of £1 to class teacher or via P/Pay
21st March	BFG Spring Disco. See poster on BFG page.
24th March	Parent Consultations 3.30pm onwards. Mental Health Team Support 3.30-4.30pm parent drop in session
25th March	Parent Consultations 3.30pm onwards
27th March	Maple Class - Woodland session p.m. Parents are welcome to attend.
3rd April	Oak Class - Woodland Session Parents welcome to attend.
4th April	Pupils break up for Easter
23rd April	Pupils return to school

## Week 23

Welcome to this week's newsletter.

It's been a very entertaining week this week. Following last week's Playground Proms where we learnt an anthem about saving the planet, this week we were lucky to have a quartet perform for us all in the school hall. It was hugely entertaining for the adults and pupils and has already inspired some of our children to want to learn a musical instrument.

I had a meeting this week with some with a working group to develop play and engagement of children in play with OPAL (Outdoor Play and Learning). We are very excited about the programme and implementing it into Beaupré. We look forward to introducing you and the children to the programme. It will take us time to implement, and we will keep you updated on our journey – hopefully getting you involved with the play and resource donations you may be able to support us with to get the programme up and running.

Wishing you all a wonderful weekend.

Mrs Munday (Headteacher)

**PLAYGROUND PROMS**

## World Book Day - Competition winners

Please find below the competition winners for World Book Day. Huge congratulations to these children and well done to everyone for your fantastic efforts with your entries. Sincere thank you to all parents for their continued support.

The children received recognition and their prizes in today's achievement assembly

### World Book Day – Competition Winners – Making a character from recyclable materials

Chestnut	Matilda
Cedar	Mia
Laurel	Luna
Maple	Olivia
Oak	Delilah
Elder	Ella

### World Book Day – Competition Winners – Autobiography

1st	Charlotte - Maple
2nd	Jonathon - Laurel
3rd	Lacey - Maple



## World Book Day - Competition winners

### World Book Day – Competition Winners – Making a character from recyclable materials



### World Book Day – Competition Winners – Autobiography





Recently, we have had the pleasure of welcoming 'The Playground Proms' into our school.

The Playground Proms are arena-style classical music workshops delivered directly to primary schools by specially trained professional Graffiti Classics musicians. The comedy string quartet performed classical music in a fun way to create an inspirational educational experience to our whole school. Even better, this was completely free for us!

It was amazing to watch our children watch in awe as the performers performed some well known classics in such a fun, interactive and child friendly way.

Many were inspired after this wonderful afternoon of live music, with some children saying that they are now going to ask for a musical instrument for their birthday.

It even inspired some of our staff to go and watch an orchestral event live.

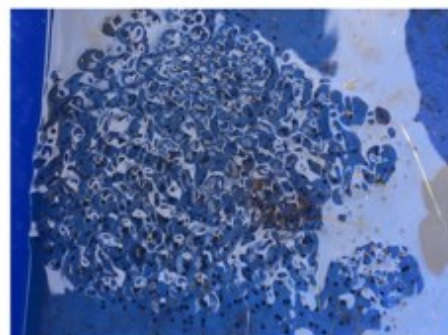
Thank you Playground Proms!

They are also holding a free event at Wisbech Library this Saturday from 11.30am. We would highly recommend.





**On Monday, Chestnut Class did a bit of pond dipping. We have been learning about life cycles and this week we looked at the frog. We had an amazing time and everyone was really sensible round the pond and followed our rules. We found quite a lot of frog spawn and brought some back to the classroom for us to watch develop.**





# Awards & Celebrations



## Attendance

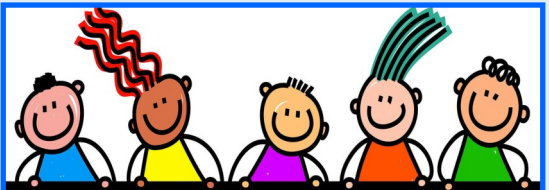
For the week ending Friday 7th March,  
Chestnut, Cedar, Maple, Oak and Elder  
Classes had attendance above 96%.

Chestnut	★
Cedar	★ ★
Laurel	
Maple	★
Oak	★
Elder	★

The winner of the 100% attendance  
prize for week ending 7th March is  
Max in Chestnut Class.

## Above and Beyond

This week's Above and Beyond  
certificate goes to Daisy in Oak Class  
for her perseverance and  
determination in all aspects of her  
learning



## House Points

- 1st Kingfishers
- 2nd Marsh Harriers
- 3rd Swans
- 4th Cranes

# Awards & Celebrations



## Outside Achievements



Delilah from Oak Class played in a rugby tournament at the weekend for her team Wisbech Rugby Club. Delilah played against the following teams Shelford, Cambridge and Huntingdon. Well played Delilah!



Olivia in Maple Class has been attending puppy training with her dog, Willow. This week Willow, with Olivia's support and guidance, passed her puppy foundation assessment.

Marianna in Chestnut Class received a 'Star of the Week' certificate at her Martial Arts class.



Well done Hope for receiving a medal for 'Star of the Week' in boxing.

William in Chestnut Class did a great Lego creation.



# Information

## Parent/Carer Consultations

Parent/carers consultations will take place on **24th and 25th of March 3:30pm onwards**, we are pleased that these will again be held face to face in school.

**Bookings will need to be made using the Pupil Asset Parent Portal.**

The Parent Portal can be found: [secure.pupilasset.com](https://secure.pupilasset.com)

If you are a new parent, you will have received an email from Pupil Asset. This email gives you online access to Pupil Asset to enable you to book a Parents' Evening appointment with your child or children's class teacher/s.

We suggest that you open the email and follow the instructions to set up an account with Pupil Asset, **using the email address that we hold for you**. You will be asked to set your own password.

After you have registered, you can book your appointment using the account details you have set up. If you have not received an email or have any problems please contact the school office.

The portal also allows you to update your personal details, such as address and telephone updates.

**The booking facility date will be open on Monday 17th March**

## Mental Health Support Team

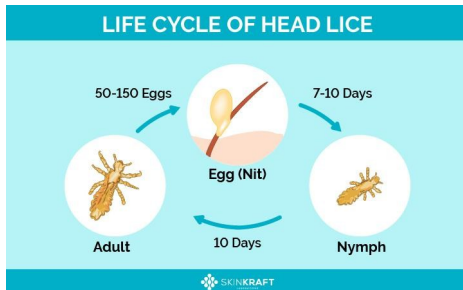
The Mental Health Support Team will be at Parents Evening on Monday 24th of March at 3.30-4.30pm in the school hall. The theme for the MHST session will be resilience, and although individual children's concerns cannot be discussed, the referral process can be explained. **All parents welcome to pop in.**



# Information

## Head Lice

We have had a confirmed case of head lice in school. Please can you check your child and treat if necessary. All long hair should be tied up.



## Comic Relief Day - Friday 21st March 2025

**This year we will be wearing something red for Comic Relief.**



Donations can be made in cash to the class teacher or on Parentpay by clicking the link <https://app.parentpay.com/ParentPayShop/Foc/Default.aspx?shopid=17499>

## Wrap Around Care - Opening Soon



Premier Education  
Shropham, Norfolk NR17 1EJ

01953 499 040  
[www.premier-education.com](http://www.premier-education.com)  
[info@premier-education.com](mailto:info@premier-education.com)

### **Exciting News – Our WAC Setting is Officially Approved & Opening Soon!**

Dear Parents & Guardians,

We are thrilled to announce that our Ofsted application has been approved, and we can now confirm that our Wrap Around Care (WAC) setting will officially open on Wednesday, 23rd April for both Before & After School Care!

Next week, we will be sharing details of our Parent Handbook, which will provide all the key information you need. Additionally, we're excited to let you know that online bookings will open from Friday, 21st March.

In the meantime if you have any questions, please feel free to reach out to our WAC Manager, Harry Collison, at [hcollison@premier-education.com](mailto:hcollison@premier-education.com)

We can't wait to welcome your children to our WAC setting and look forward to providing them with a safe, fun, and engaging experience!

Best regards, Premier Education

# BFG - Dates for your diary

## BFG Diary Dates

**21st March** - School Disco tickets will go on sale on Monday 17th March from the playground in the afternoon and every day following. Tickets will also be available from the school office in the mornings from the 18th March 2025.

**Easter Raffle TBC** - Online Raffle

**2nd April - Tuck Fridays** - Selling Bunny Marshmallows

**11th July TBC** - School Disco



Beaupre  
Fundraising  
Group

# SPRING Disco

Reception, Year 1, 2 & 3  
5:45–6:45pm

21 March  
Years 4, 5 & 6  
7:00–8:00pm

**TICKETS £3**

Ticket includes unlimited squash or water  
Refreshments available to purchase at the disco!

The poster features a vibrant blue background with a pink disco ball in the top right, yellow and orange butterflies on the sides, and a pink treble clef with musical notes at the bottom. The text is in white and yellow, with a calendar icon next to the date.

# History of Music Day

History of Music Day returns on  
**Monday 31st March 2025!**

Each class will focus their learning on a different decade, spending the day celebrating the music and culture of the time!

Chestnut Class – 2000s

Cedar Class – 1990s

Laurel Class – 1980s

Maple Class – 1970s

Oak Class – 1960s

Elder Class – 1950s

Children are invited to come to school in clothing inspired by their decade!

## Dates for your diary - New events shown in bold

<b>2025</b>	
18th March	<b>Laurel Class - Woodland Session p.m. Parents are invited.</b>
20th March	<b>Cedar Class - Woodland Session p.m. Parents are invited.</b>
21st March	<b>Comic Relief</b>
24th March	<b>Parents Evening + Mental Health Support Team parent drop in</b>
25th March	<b>Parents Evening</b>
27th March	<b>Maple Class - Woodland Session p.m. Parents are invited.</b>
3rd April	<b>Oak Class - Woodland Session. Parents welcome to attend</b>
4th April	<b>Pupils break up for Easter</b>
23rd April	<b>Pupils return to school</b>
25th April	<b>Secondary School offers go out today (Second rounds)</b>
30th April	<b>Yr 6 Crucial Crew Trip p.m.</b>
5th May	<b>May Day - School Closed</b>
15th May	<b>Out of the World - Special Lunch</b>
12th-15th May	<b>SATs week</b>
23rd May	<b>Pupils break up for half term</b>
2nd June	<b>Inset Day - School is closed</b>
3rd June	<b>Pupils return to school</b>
3rd & 4th June	<b>Yr 6 Residential Trip - Fenland Adventure Shacklewell Hollow</b>
17th June	<b>Year 1 Literacy Festival Trip to Wisbech Castle</b>
18th June	<b>10 x Yr 5 pupils to attend a STEM Conference at TCA</b>
19th June	<b>Dive - Special Lunch</b>
24th June	<b>Sports Day</b>
27th June	<b>Reserve Sports Day</b>
26th June	<b>Year 5 Literacy Festival Trip to Wisbech Castle</b>
1st & 2nd July	<b>Transition Days - Thomas Clarkson Academy</b>
3rd & 4th July	<b>Transition Days - The Wisbech Academy</b>
4th July	<b>Year 3 Level 1 Bikeability</b>
14th July to 17th July	<b>Year 5 Level 1 &amp; 2 Bikeability</b>
23rd July	<b>Pupils break up for the Summer holiday</b>

# 2025/2026 Term Dates

## Beaupre Primary Academic Calendar 2025/26

September 2025							
wk	Mo	Tu	We	Th	Fr	Sa	Su
36	1	2	3	4	5	6	7
37	8	9	10	11	12	13	14
38	15	16	17	18	19	20	21
39	22	23	24	25	26	27	28
40	29	30					

October 2025							
wk	Mo	Tu	We	Th	Fr	Sa	Su
40			1	2	3	4	5
41	6	7	8	9	10	11	12
42	13	14	15	16	17	18	19
43	20	21	22	23	24	25	26
44	27	28	29	30	31		

November 2025							
wk	Mo	Tu	We	Th	Fr	Sa	Su
44						1	2
45	3	4	5	6	7	8	9
46	10	11	12	13	14	15	16
47	17	18	19	20	21	22	23
48	24	25	26	27	28	29	30

December 2025							
wk	Mo	Tu	We	Th	Fr	Sa	Su
49	1	2	3	4	5	6	7
50	8	9	10	11	12	13	14
51	15	16	17	18	19	20	21
52	22	23	24	25	26	27	28
1	29	30	31				

January 2026							
wk	Mo	Tu	We	Th	Fr	Sa	Su
1				1	2	3	4
2	5	6	7	8	9	10	11
3	12	13	14	15	16	17	18
4	19	20	21	22	23	24	25
5	26	27	28	29	30	31	

February 2026							
wk	Mo	Tu	We	Th	Fr	Sa	Su
5						1	
6	2	3	4	5	6	7	8
7	9	10	11	12	13	14	15
8	16	17	18	19	20	21	22
9	23	24	25	26	27	28	

March 2026							
wk	Mo	Tu	We	Th	Fr	Sa	Su
9						1	
10	2	3	4	5	6	7	8
11	9	10	11	12	13	14	15
12	16	17	18	19	20	21	22
13	23	24	25	26	27	28	29
14	30	31					

April 2026							
wk	Mo	Tu	We	Th	Fr	Sa	Su
14			1	2	3	4	5
15	6	7	8	9	10	11	12
16	13	14	15	16	17	18	19
17	20	21	22	23	24	25	26
18	27	28	29	30			

May 2026							
wk	Mo	Tu	We	Th	Fr	Sa	Su
18					1	2	3
19	4	5	6	7	8	9	10
20	11	12	13	14	15	16	17
21	18	19	20	21	22	23	24
22	25	26	27	28	29	30	31

June 2026							
wk	Mo	Tu	We	Th	Fr	Sa	Su
23	1	2	3	4	5	6	7
24	8	9	10	11	12	13	14
25	15	16	17	18	19	20	21
26	22	23	24	25	26	27	28
27	29	30					

July 2026							
wk	Mo	Tu	We	Th	Fr	Sa	Su
27			1	2	3	4	5
28	6	7	8	9	10	11	12
29	13	14	15	16	17	18	19
30	20	21	22	23	24	25	26
31	27	28	29	30	31		

August 2026							
wk	Mo	Tu	We	Th	Fr	Sa	Su
31						1	2
32	3	4	5	6	7	8	9
33	10	11	12	13	14	15	16
34	17	18	19	20	21	22	23
35	24	25	26	27	28	29	30
36	31						

Weekends	Staff Training/Inset Days	School Days
School Holidays	Bank Holidays	